

# **PARAGON SIESTA PLUS**

## **Remote Control**

### **OWNER'S MANUAL**

**INCLUDES USER, INSTALLATION & MAINTENANCE  
INSTRUCTIONS**

**Please read these instructions carefully before you start  
using the appliance**

**Keep this booklet handy for future reference**

**This appliance is  
for use in GREAT BRITAIN or  
IRELAND only**

**A QUALITY PRODUCT FROM PARAGON FIRES**

**PARAGON FIRES  
TELFORD  
SHROPSHIRE  
TF7 4QJ**

# PARAGON SIESTA Plus Owner's Manual

## CONTENTS

PAGE

### USERS INSTRUCTIONS

<b>SECTION ONE Important Information</b> .....	<b>3</b>
Important Information.....	3
Introduction.....	4
<b>SECTION TWO Operating the Appliance</b> .....	<b>5</b>
To light the appliance using the remote hand set.....	5
Low battery indication (Hand Set).....	6
To replace battery in hand set.....	6
Low battery indication (Appliance).....	6
To replace appliance battery pack.....	6
<b>SECTION THREE Fuel Bed Layout</b> .....	<b>7</b>
Coal Fuel Bed.....	7
Pebble Fuel Bed.....	8
<b>SECTION FOUR Cleaning</b> .....	<b>8</b>
Cleaning Decorative Trim.....	8
Fuel Bed parts.....	8
<b>SECTION FIVE General Points</b> .....	<b>9</b>
<b>INSTALLATION INSTRUCTIONS</b>	
<b>SECTION SIX Appliance Data</b> .....	<b>10</b>
<b>SECTION SEVEN Regulations &amp; Warnings</b> .....	<b>10</b>
<b>SECTION EIGHT Siting the Appliance</b> .....	<b>11</b>
Class One.....	11
Class Two Pre-cast.....	12
Class Two Fabricated Metal.....	12
Clearance to Shelf or Surround.....	12
Clearances at Side of Fire.....	13
<b>SECTION NINE To Install the Appliance</b> .....	<b>13</b>
Checking the Flue and Fire Opening.....	13
Connecting the Gas Supply.....	13
Concealed gas connection (from the rear).....	13
Visible gas connection.....	14
Fixing Back Plate to Fire Opening.....	14
Gas Soundness Test.....	15
Check Burner Pressure and General Operation.....	15
Fuel bed Lay out.....	15
<b>SECTION TEN Checking Operation of Fire</b> .....	<b>16</b>
Checking Product Clearance.....	16
Advise Customer.....	16
<b>MAINTENANCE INSTRUCTIONS</b>	
<b>SECTION ELEVEN Maintenance</b> .....	<b>17</b>
Replacement of Gas Control.....	17
Replacement of Injector.....	17
Replacement of Silencer.....	18
Replacement of Oxy-Pilot Assembly.....	18
Replacement of Control Unit (EDB).....	18
<b>SECTION TWELVE Wiring Diagram</b> .....	<b>19</b>
Guarantee / Appliance Information.....	20

## SECTION ONE Important Information

### Consumer Protection Information

As manufacturers and suppliers of heating products, we take every care, as far as is reasonably practicable, that these products are so designed and constructed as to meet the general safety requirement when properly used and installed. To this end, our products are thoroughly tested and examined before despatch.

**IMPORTANT NOTICE:** Any alteration that is not approved by the appliance manufacturer could invalidate the approval of the appliance, operation of the warranty and could affect your statutory rights.

### Health and Safety Notice

#### Important

This appliance could contain some of the materials, indicated below, that could be interpreted as being injurious to health and safety. It is the users / installers responsibility to ensure that the necessary personal protective clothing is worn when handling these materials, see below for information.

**Artificial Fuels, Mineral Wool, Insulation Material, Refractory/Ceramic Fibres, Glass Yarn** - *may be harmful if inhaled, may be irritating to skin, eyes, nose and throat.*

**When handling** *avoid inhaling and contact with skin or eyes. Use disposable gloves, facemasks and eye protection. After handling wash hands and other exposed parts. If a vacuum is used for cleaning the coals or cleaning after servicing / installation it is recommended that it be of the type fitted with a HEPA filter.*

**Disposal of refractory/ceramic materials.** To keep dust to a minimum these materials should be securely wrapped in polythene and be clearly labelled 'RCF waste'. These materials are not classified as 'hazardous waste and should be disposed of at a site licensed for the disposal of industrial waste.

- The PARAGON SIESTA PLUS is a decorative fuel effect appliance with a radiant heat conserver box for improved efficiency.
- It is operated via remote control. The system is powered by a battery pack; therefore no mains electrical supply is required.
- The PARAGON SIESTA PLUS is designed and tested to the requirements of the EN 509.
- The appliance is for use on Natural Gas only.
- The chimney or flue (unless new or previously used with a gas appliance) must be swept before installation if it has been used for solid fuel.

### WARNING

This appliance has a naked flame, as with all such fires it is recommended that a fireguard should be used for the protection of children, the elderly and infirm. Fireguards should conform to BS 6539 (1984) (Fireguards for use with solid fuel appliances).

## SECTION ONE Important Information Continued

### INTRODUCTION

The PARAGON SIESTA PLUS incorporates a single gas control, which selects ignition pilot, with variable setting between low and high settings. The appliance is operated via a remote control hand set.

The PARAGON SIESTA PLUS is battery operated; therefore no mains electrical supply is required. Power to the appliance is provided by 6 high power alkaline 1.5V batteries (AA size) (a spare set of AA batteries is supplied with the appliance); these batteries can be changed to nickel metal hydride rechargeable batteries providing they have a minimum capacity of 2200 mAh. A set of 6 high power alkaline 1.5V batteries (AA size) would give in the order of 200-380 operations while 6 rechargeable batteries when fully charged would give approximately 150-250 operations. These figures are only given for guidance and may vary depending on how the appliance is used and the battery manufacturer and quality.

A special long life lithium battery is available as an optional extra and would be expected to give in excess of 12 months normal use (a minimum of 1000 operations), however it is not subject to the guarantee. For more information call the telephone number located on the back of this booklet.

Using the standby facility when the appliance is switched off for short periods can extend battery life. The standby facility switch off the mains gas supply to the appliance but the pilot remains alight.

An audible double bleep warning indicates that the appliance batteries need changing or charging (if rechargeable batteries have been used)

**Important : Batteries should be changed or recharged as soon as possible as the appliance will not light if the battery power gets to low.**

In GB, the appliance must be installed by a competent person i.e. CORGI-registered, in accordance with the GAS SAFETY (INSTALLATION AND USE) REGULATIONS, The Building Regulations (or The Building Regulations (Scotland) or The Building Regulations (Northern Ireland)) and The Current I.E.E. Wiring Regulations, if appropriate.

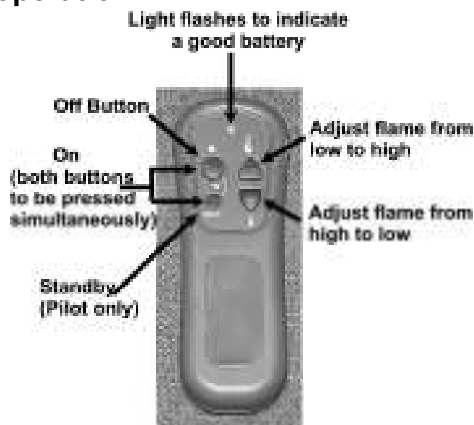
In IE, the appliance must be installed by a competent person and installed in accordance with the current edition of I.S.813 Domestic Gas Installation, the current Building Regulations and the current ETCl rules for electrical installation, if appropriate.

## SECTION TWO Operating the Appliance

Before attempting to operated the appliance check that nothing has been placed in front of the appliance that may interfere with the remote sensor operation.

To light the appliance using the remote hand set:

- Point the remote control hand set in the direction of the appliance and simultaneously press the buttons marked '●' and 'standby'. Continue to hold in these two buttons until a 'bleep' is heard (approximately 2-3 sec.) and then release these buttons. The appliance will automatically go through the ignition sequence and the pilot should ignite. Once the pilot is alight the appliance will automatically go to the high setting (approximately 20-25sec). If the ignitor stops sparking and the pilot fails to light repeat this procedure.
- If the ignitor stops sparking and the pilot fails to light press the ● button before repeating this procedure.
- The appliance can be adjusted up or down by pressing the appropriate button 🔥 (low setting) or 🔥 (high setting). These buttons have a dual function. If they are pressed until a 'bleep' is heard and then released immediately the appliance will automatically go to the maximum 🔥 or minimum settings 🔥. On the other hand if the button is not released gradual adjustment is made until the button is released or until the maximum or minimum setting is reached.
- To switch off the appliance press the ● button or if the appliance is to be switch off for a short period it is recommended that the 'standby' button be used. This switches the main burner off but leaves the pilot on and will extend battery life.
- The appliance can be switch off with out using the hand set by removing the appliance battery located behind the ash pan cover. When the batteries are removed there will be a delay (up 3 minutes) after which double bleeps may be heard and shortly after the appliance will extinguish. Ensure that the battery is reconnected once the fire as been extinguished. The appliance cannot be operated without the use of the handset.

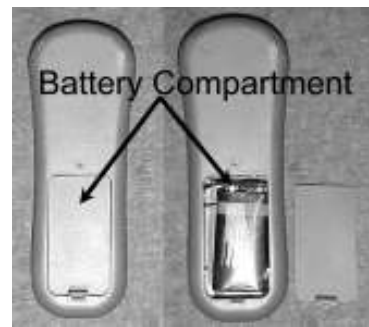


**NOTE: If the fire is extinguished for any reason wait 3 minutes before relighting.**

**SECTION TWO Operating the Appliance Continued**

**Low Battery Indication (Hand Set)**

If while pressing any of the buttons on the remote hand set the low battery indicator lamp either stops flashing or appreciably slows then the battery should be changed.



and

**To Replace Battery In Hand Set (9V size MN1604 or 6F22)**

Remove the cover from the rear of the handset fit replacement battery. Take care not to stain the battery connections.

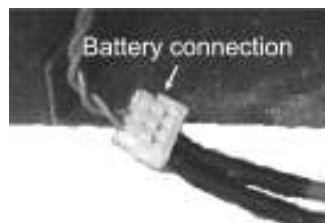
**Low Battery Indication (Appliance)**

If you hear a double 'bleep' sound come from the appliance this indicates the appliance battery pack is low and should be changed as soon as possible. The appliance will continue to work normally for a short period but if the warning is ignored you may experience difficulty lighting the appliance or the appliance may automatically switch off for no apparent reason.

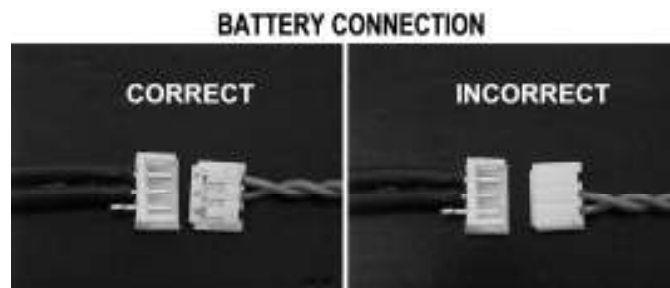
**NOTE:** The appliance cannot be used when the battery is completely flat.

**To Replace Appliance Batteries(6 High Power Alkaline AA 1.5V) (Rechargeable batteries can be used providing they are a nickel metal hydride type 1.5V AA with a minimum capacity of 2200mAh).(A long life lithium battery is available as an optional extra call the number shown on the last page of these instructions for further information).**

- a. The battery power pack is located behind the fascia; carefully slide the battery holder forward and replace the six high power alkaline AA batteries as a complete set or recharge as appropriate. **WARNING, batteries will overheat if fitted incorrectly, when fitting the batteries ensure that they are fitted as per the marking on the rear of the holder (i.e. minus of battery against spring).** If rechargeable batteries are used they must be a Nickel Metal Hydride type with a minimum capacity of 2200mAh.



- b. If the appliance is fitted with the special lithium battery (optional) disconnect the wires the battery connector and replace ensuring the connection is made correctly.



at

- c. **Important:** The battery pack or holder must be placed in position under the outer trim on the left side of the appliance mounting frame. A fold down flap is provided to support the battery pack.

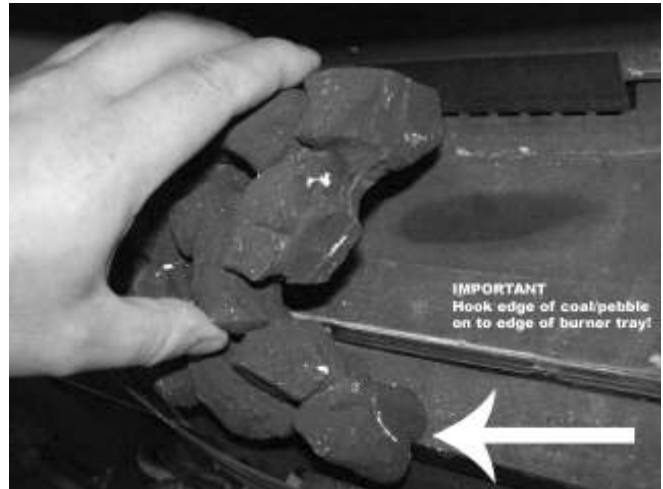
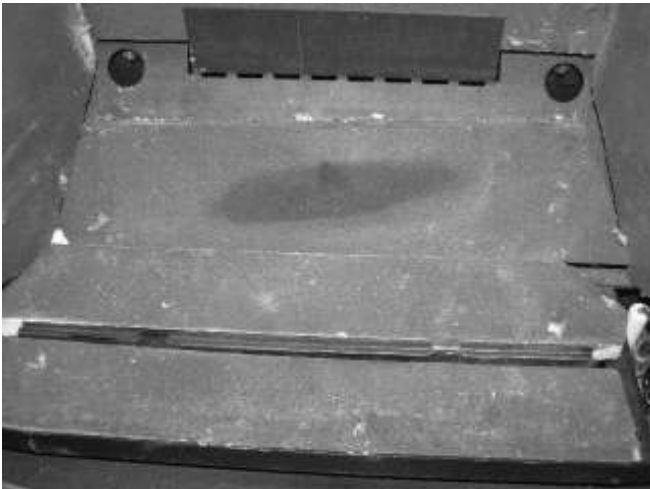
## SECTION THREE Fuel Bed Layout

It is important that all the fuel bed and moulded shapes are positioned as shown in these instructions.

**Some soot deposits will form on the fuel bed, this is perfectly normal and adds to the realism of the appliance. USE ONLY THE FUEL BED COMPONENTS PROVIDED AND NO ADDITIONAL FUEL BED ITEMS MUST ADDED.**

The fuel bed set consists of: - 1 two piece fuel bed (coal or pebble)

Ensure the Fuel Bed Support boards are in position so that it covers over the top of the burner support and angles back support as shown. **DO NOT** place in the small back liner board until the fuel bed is fully in place.



### COAL FUEL BED

Ensure that the 'Fuel Bed Support' is fitted as above. Firstly position the left hand coal matrix as above and then the right hand, as shown below. Make sure that the front edge of the fuel matrix locates behind the front edge of the burner tray to secure the fuel bed properly as shown above.

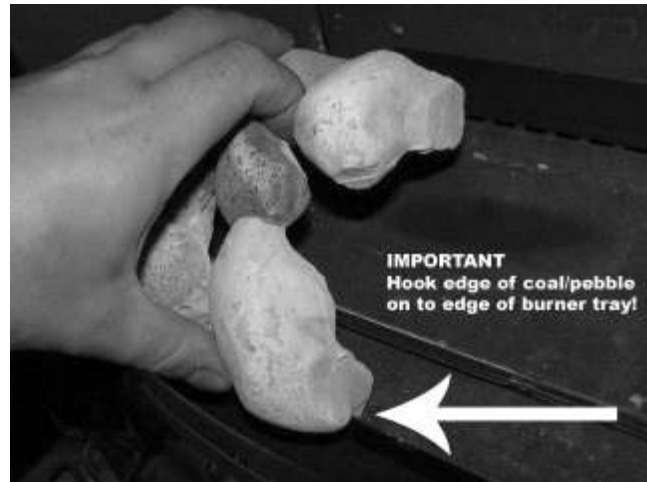
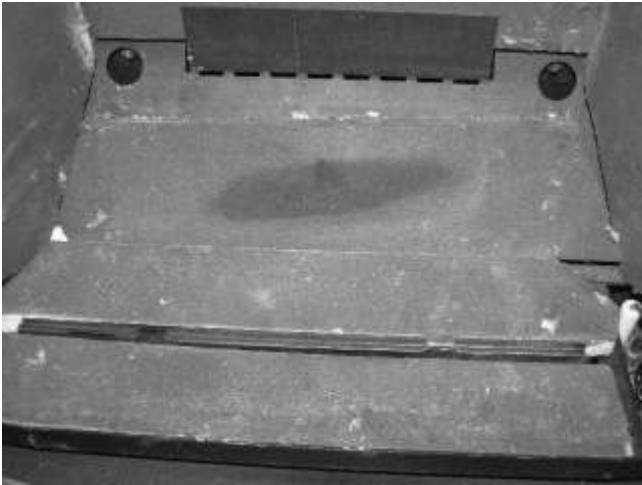


Now place the right side of the fuel bed in position behind the front ledge of the tray as shown above. Finally place the small back liner board in place behind the fuel bed to cover the metal bracket behind.

## **PARAGON SIESTA PLUS Users Instructions**

### **PEBBLE FUEL BED**

Ensure that the 'Fuel Bed Support boards" are fitted as below. Firstly position the left hand pebble matrix and then the right hand, as shown below. DO NOT fit the small back liner board until the fuel bed is in position.



Now place the right side of the fuel bed in position behind the front ledge of the tray as shown above. Finally place the small back liner board in place behind the fuel bed to cover the metal bracket behind

## **SECTION FOUR Cleaning**

**Warning:** -Before you clean any part of the appliance ensure that the appliance is turned off and cool.

### **CLEANING: DECORATIVE TRIM**

- The finish of the trim may from time to time need cleaning. They should be removed for cleaning.
- These surfaces should be dusted regularly and any marks removed with a soft cloth.
- Abrasive or chemical cleaner should never be used.

### **CLEANING Fuel Bed Parts**

**Important:** - *Refer to the 'Heath & Safety Notice located on page 3 of this booklet before cleaning or replacing any refractory material.*

- The fuel bed parts are delicate and they should be handled with great care.



## **SECTION FOUR Cleaning cont'd**

- The loose shapes may be removed for cleaning. They can be brushed very gently with a soft brush to remove dust or any deposits.
- Care should be taken to avoid contact with the refractory lining or the Fuel Bed Support; this is a delicate surface and should **not** be wiped or rubbed.
- A vacuum cleaner may only be used after all the Shapes and the Fuel Bed Support have been removed.

## **SECTION FIVE General Points**

Like all appliances incorporating an aerated burner a low frequency noise may be heard, particularly on the Low setting, this is quite normal and does not affect the operation of the appliance.

It is advised that your fire must be serviced annually as this is more likely to provide trouble-free operation.

It is important that: -

- The chimney or flue is checked annually to ensure clearance of combustion products.
- The fire does not normally require purpose-built ventilation but if for any special reason purpose-built ventilation is provided it should be checked periodically to ensure freedom from obstruction.
- Any debris from the chimney or flue should be removed. The fire should be allowed to cool for three to four hours before it is removed.
- Rubbish must not be thrown onto the fuel bed under any circumstances.

The only user removable parts are: -

- Pebble or Coal Matrix
- Fuel Bed Support
- Decorative effect trim
- Appliance battery pack

# PARAGON Siesta Plus Installation Instructions

## SECTION SIX Appliance Data

Category of appliance:.....BII<sub>AS</sub> Category I<sub>2H</sub>  
Overall dimensions:.....Height 515mm  
Width 700mm  
Forward Projection:.....85mm, (From Wall.)  
Weight:.....15kg  
Gas Type:.....G20 Natural Gas  
Gas Pressure:.....20 mbar +/- 1.0mbar  
Pressure Test Point Location:.....Gas inlet elbow  
Gas Input (Gross):.....6.6 kW (Maximum) 2.4 kW (Minimum)  
Injector:.....Marked 400  
Gas Connection:.....8.0mm O/D, tube.  
Data Badge Location:.....Behind the decorative Fascia  
Battery..... Remote handset 9v size MN 1604 or 6F22, Appliance 6x 1.5 AA high power alkaline or 6 x 1.5 V Rechargeable nickel metal hydride with a minimum capacity of 2200mAh. A special long life lithium battery 7.2V is available as an optional extra.

## PACK CONTENTS

Appliance	
Appliance mounting frame	<b>Refractory Components</b>
Owners Instruction	Base board
Foam Seal	Fuel Bed Matrix Pebble or Coal
Trim and fascia set	
Remote handset (With Battery)	
Appliance battery	

## SECTION SEVEN Regulations and Warnings

- THIS APPLIANCE MUST ONLY BE INSTALLED IN GREAT BRITAIN OR IRELAND.
- THE APPLIANCE IS SUITABLE FOR USE ON NATURAL GAS ONLY.
- THE APPLIANCE IS INTENDED FOR DECORATIVE PURPOSES.
- (GB) NO SPECIAL VENTILATION BRICKS OR VENTS ARE REQUIRED INTO THE ROOM CONTAINING THE APPLIANCE, PROVIDING NORMAL ADVENTITIOUS ROOM VENTILATION EXISTS. THE INSTALLER MUST SATISFY THIS POINT BY CARRYING OUT THE MANDATORY SPILLAGE TEST.
- (IE) PERMANENT VENTILATION MUST COMPLY WITH THE CURRENT EDITION OF IS813.
- In GB, IT IS THE LAW THAT ALL GAS APPLIANCES MUST BE INSTALLED BY A COMPETENT PERSON; I.E. A CORGI REGISTERED INSTALLER, IN ACCORDANCE WITH THE CURRENT GAS SAFETY (INSTALLATION AND USE) REGULATIONS (AS AMENDED), ALL RELEVANT PARTS OF THE LOCAL AND NATIONAL BUILDING REGULATIONS AND ALL RELEVANT RECOMMENDATIONS OF THE FOLLOWING BRITISH STANDARDS. FAILURE TO DO SO COULD LEAD TO PROSECUTION.

THE FOLLOWING ARE RELEVANT CODES OF PRACTICE AND BRITISH STANDARDS: -

BS 5871 PART 2	BS 8303
BS 5440 PART 1	BS 1251
BS 6891	BS 6461 PARTS 1 AND 2
BS 715	BS 1289 PART 1

Note: - This appliance must be installed to current versions of the above standards and include any relevant amendments.

### SECTION SEVEN Regulations and Warnings Cont.

THE BUILDING REGULATIONS ISSUED BY THE DEPARTMENT OF THE ENVIRONMENT.  
THE BUILDING STANDARDS (SCOTLAND) (CONSOLIDATED) REGULATIONS ISSUED BY THE  
SCOTTISH DEVELOPMENT OFFICE.

IN IE, THE APPLIANCE MUST BE INSTALLED BY A COMPETENT PERSON AND INSTALLED IN ACCORDANCE WITH THE CURRENT EDITION OF I.S.813 DOMESTIC GAS INSTALLATION, THE CURRENT BUILDING REGULATIONS AND THE CURRENT ETCI RULES FOR ELECTRICAL INSTALLATION ,IF APPROPRIATE.

**PRIOR TO THE INSTALLATION ENSURE THAT THE LOCAL DISTRIBUTION CONDITIONS (IDENTIFICATION OF TYPE OF GAS AND PRESSURE) AND ADJUSTMENT OF THE APPLIANCE ARE COMPATIBLE. (G20 @ 20mbar)**

#### WARNINGS

- This appliance has a naked flame, and with all such fires, it is recommended that a fireguard should be used for the protection of children, the elderly, or the infirm. Fireguards should conform to B.S.6539 (1984) (Fireguards for use with solid fuel appliances)
- **This appliance incorporates a safety device in the form of an Oxygen depletion system. IT MUST NOT BE ADJUSTED OR PUT OUT OF OPERATION! THIS IS A NON-SERVICEABLE ITEM AND MUST BE EXCHANGED AS A COMPLETE ASSEMBLY USING ONLY THE ORIGINAL MANUFACTURER'S PART.**

During initial firing, an odour may be evident. This is the starch binder used during the manufacture of the fibre components of the fire, and there are **no harmful** effects produced.

Care must be taken to prevent any damage being caused to surrounding soft furnishing or decoration, e.g. many embossed vinyl wall coverings may become discoloured if placed too close to the appliance.

#### IMPORTANT NOTES

**This appliance can be used in conjunction with the following chimneys: -**

- Conventional brick or stone chimney,
- A pre-cast flue (subject to adequate draw) or
- A metal flue box conforming to BS 715, further details are covered in later text .

### SECTION EIGHT Siting the Appliance

The fire can be installed in the following flues and locations: -

#### • CLASS ONE

A conventional brick or stone chimney, with the builder's opening constructed of non-combustible material as used for a solid fuel appliance, with a minimum effective cross-sectional dimension of 225 x 225 mm (9 x 9 ins) or a lined flue (e.g. clay, metal etc.) with a minimum diameter of 125 mm (5 ins), with a minimum effective overall height of 3 metres (10 ft). Consisting of a builder's opening with a minimum height of 450 mm and minimum width of 320 mm wide and a minimum depth of 150mm (or 120mm if flue has never been used for solid fuel) to allow sufficient volume for debris collection. No hearth is necessary but the base of the opening must be 50mm or more from floor surface.

### SECTION EIGHT Siting the Appliance Cont.

Any permanent flue restriction or variable dampers shall be removed or locked fully open. The chimney should be swept prior to installation if not new or previously used with a gas appliance.

#### CLASS TWO

##### Pre-cast

A pre-cast flue correctly constructed conforming to the requirements of BS 1289: 1975, 1986 or 1989 with a minimum effective overall height of 3 metres (10 ft) which is correctly terminated (see BS 5440).

Note: An inspection should be made to ensure that the internal walls of the flue are clear of mortar fangs. It is recommended that the plasterwork should not be directly bonded to the surface of the flue blocks, ensuring that there is a small air gap between the flue blocks and the wall surface. The fire can be installed with the plasterwork being directly bonded to the flue blocks but there is a risk of surface cracking occurring to the plaster above the appliance.

The gather block which is the first block with a closed face in the block stack must be at least 500mm from its under edge to the floor surface covering. The reason for this is to ensure that when the appliance is fitted the lowest point of the appliance is a minimum of 50mm from the floor covering.

It will be necessary to close off the lower part of the flue block opening to provide an opening height of 450mm to 470mm.

It is important that none combustible material (i.e. brick, mortar, plaster etc.) are used to close off the base of the opening, and that the new lower surface of the opening is made flat and smooth (this flat surface is for the appliance to rest upon and to shut off air below the appliance)

#### • CLASS TWO

##### Fabricated metal

A double-walled or insulated metal flue box built to the requirements of BS 715 with a minimum diameter of 125 mm (5 ins) and a minimum effective overall height of 3 metres (10 ft).

**Note: If the flue box is to be used with an existing brick or stone chimney a 125 mm (5 ins) minimum diameter flue liner conforming to BS 715 should be used.**

**Dampers or register plates must not restrict any of the above flues. The flue must only service a single appliance and not have any branches or traps that may impede the natural draught. If a terminal is fitted it must be suitable for the purpose (see 'Approved Flues & Terminals' published by BG Technology Certification Services).**

- The front face and the base of the fireplace opening must be flat to ensure that a good seal is formed between the rear and base of the appliance and the chimney to avoid any reduction of natural draught.
- The gather box must be at least 500mm from its top inside edge to the floor surface covering. The reason for this is to ensure that when the appliance is fitted the lowest point of the appliance is a minimum of 50mm from the floor covering.
- It will be necessary to close off the lower part of the flue box opening to provide an opening height of 450mm to 470mm.

It is important that non combustible material (i.e. metal, brick, mortar, plaster etc.) are used to close off the base of the opening, and that the new lower surface of the opening is made flat and smooth (this flat surface is for the appliance to rest upon and to shut off air below the appliance).

## SECTION EIGHT Siting the Appliance Cont.

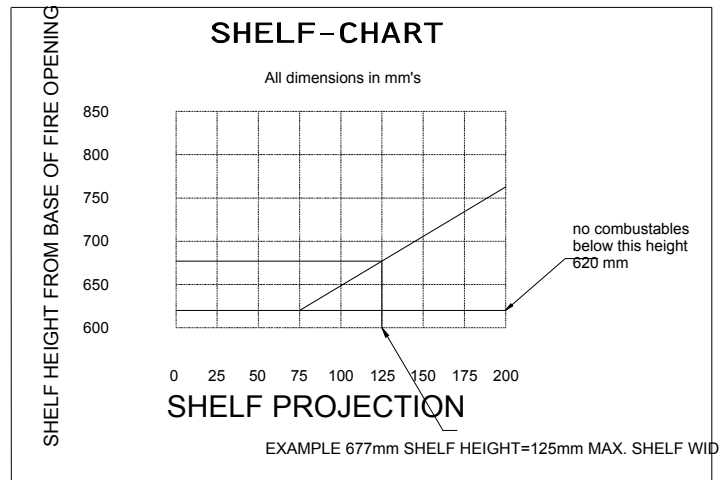
### Clearance to Shelf or Surround

To check the compatibility of a combustible shelf or surround, refer to the chart.

### Clearances at side of fire

Minimum width between vertical sides of combustible surround should not be less than 750 mm provided fire is central to surround and sides do not project more than 150 mm. When vertical side forward projection is increased by 12.5 mm add 50 mm to inside width of surround.

N.B. When fire is fitted this gives a minimum side clearance of 100mm.



## SECTION NINE To Install the Appliance

### CHECKING THE FLUE AND FIRE OPENING

- Check that the chimney conforms to the required specifications as previously stated. Examine the condition and carry out any remedial work.
- If the flue has been used for solid fuel it should be swept prior to the installation.
- Prior to installing the appliance a smoke test (using a smoke bomb) should be carried out to check that satisfactory smoke clearance has been established. If all the smoke is not drawn into the flue, pre-heat the flue with a blowtorch or similar and re-check. If there is any uncertainty examine for the cause and, if necessary, seek expert advice.
- When installing this appliance against a dry lined (plasterboard) wall ensure that any void between the plasterboard and the wall is sealed with a suitable non-combustible material (i.e. plaster or mortar).

### CONNECTING THE GAS SUPPLY

Determine where the gas supply is to be connected to the appliance. This may be done from the front of the unit from either the right or left side, or a concealed fitting from the rear.

#### Concealed gas connection (from the rear)

Note: It may be necessary to remove the burner to aid installation.

**IMPORTANT:** When removing the burner you must support the appliance battery pack to avoid putting undue strain on the leads.

It is recommended that the wall mounting plate and the fire box are temporarily fitted to the flue prior to routing the gas to help determine the best position for the gas supply

- If the supply is to be a concealed connection the supply must be routed to the right side of the unit, taking into account the requirements of BS 6891 1988 dealing with enclosed pipes.

A blind grommet is fitted to the rear of the appliance for the entry of the gas pipe (a hole should be cut in the grommet to fit the supply pipe the grommet must be put back into place to seal box).

### SECTION NINE To Install the Appliance Continued

- A restrictor elbow is positioned under the fire to the right-hand side with a 8mm compression connection at its inlet.
- Ensure after the connection as been made to the restrictor elbow that that shut off screw within the elbow is fully open and the cap fitted and sealed

#### Visible gas connection (to the front)

- Connections may be made from the front of the appliance from the right in 8mm diameter pipe.
- The tube should be routed under the fascia of the control panel in the channel provided below the gas control.
- The inlet elbows should be rotated to the required position and the end of the 8mm gas feed pipe formed to route under control and into the inlet elbow.
- A suitable means of isolation should always be fitted in the supply feed to the fire to facilitate servicing.

#### Fixing the back plate to the fire opening (Fascia Assembly)

- Ensure that the fire opening size and position meets with the requirements stated in section 8 for the flue type (*Important: ensure a 50mm minimum from floor covering to base of fire opening*).
- Align the inside base of the back fixing plate with the base of the fire opening, use a spirit level to ensure level and mark through the four fixing holes
- Drill the four marked positions with a masonry drill, apply a suitable high temperature sealant (high modulus silicone or fire clay etc.) around the rear of the mounting plate, fix the mounting plate in position using wood screws and wall plugs. The spacer frame does not need to be removed until the fire reaches the end of its life so it can be permanently sealed.
- The main firebox can now be positioned into the opening ensuring that the holes in the firebox flange pass over the four projecting studs from the mounting plate. It will be necessary to make the gas connection to the appliance at this stage this can be aided by the removal of the burner unit (see “Connecting the gas supply”).
- Where required fit the inner trim and brushed stainless fuel retainer assembly to the studs before fitting the securing nuts.
- Fit the Four M4 nuts to secure the firebox to the spacer box frame. (See Fig 3)
- Now fit the firebox liners and fuel beds as described in the relevant section on fuel bed assembly.
- For the remote control version, fit the battery in the fold down metal shelf provided to the left of the spacer frame assembly. On the Solar mini version the battery can be housed in its reflective pouch to the left of the burner behind the ash pan cover.
- The decorative fascia front panel can now be fitted; this is fixed by hooking over the top of the firebox top corners, or magnetically supported with additional support tabs on the firebox base for the Solar mini version.
- Locate the battery and remote eye receiver within the space provided on the spacer frame shelf.



## **SECTION NINE To Install the Appliance Continued**

- After the gas soundness test, and fuel bed as been laid correctly and a satisfactory spillage test as been carried out the decorative frame can be finally fitted.
- The receiving eye must be fixed to the rear of the decorative frame or the front of the spacer frame, this is done by peeling off the backing from the small clip and fixing to the rear of the decorative frame in the centre of the lower edge.
- Carefully position the eye under the clip and squeeze the clip closed to hold the eye but ensuring the eye can be seen by line of sight in all areas where the hand control will be used.
- **NOTE VERY IMPORTANT:** ENSURE THAT THE RECEIVING EYE RESPONDS TO THE HAND REMOTE IN ALL POSITION WHERE REQUIRED. Adjust eye position as necessary

### **Gas Soundness Test**

Turn on the gas supply to the appliance and check for soundness in accordance with current codes of practice. (refer to BS6891 (in GB) or IS813(in IE)

### **Check Burner Pressure and General Operation**

- Remove decorative fascia panel by lifting away.
- Remove the screw from the pressure test point on the inlet elbow and fit pressure gauge.
- Turn on the gas to the appliance.
- Purge the air from the appliance by operating the appliance (see Section 2). The appliance will spark for approximately 20 second at which point if no ignition is detected the appliance will go to lock out and you must repeat the ignition procedure.
- Check that the electrode is sparking at the gap between the thermocouple tip and the electrode and that the pilot ignition is established. After approximately 20 seconds the main burner will light on the high setting.
- Check the inlet pressure is  $20 \pm 1$  mbar.
- Refit pressure test point screw and check for leaks.
- Refit ash pan cover.

### **Fuel Bed Layout**

**IMPORTANT: - REFER TO THE 'HEALTH & SAFETY NOTICE SEE SECTION ONE OF THIS BOOKLET BEFORE CLEANING OR REPLACING ANY REFRACTORY MATERIAL.**

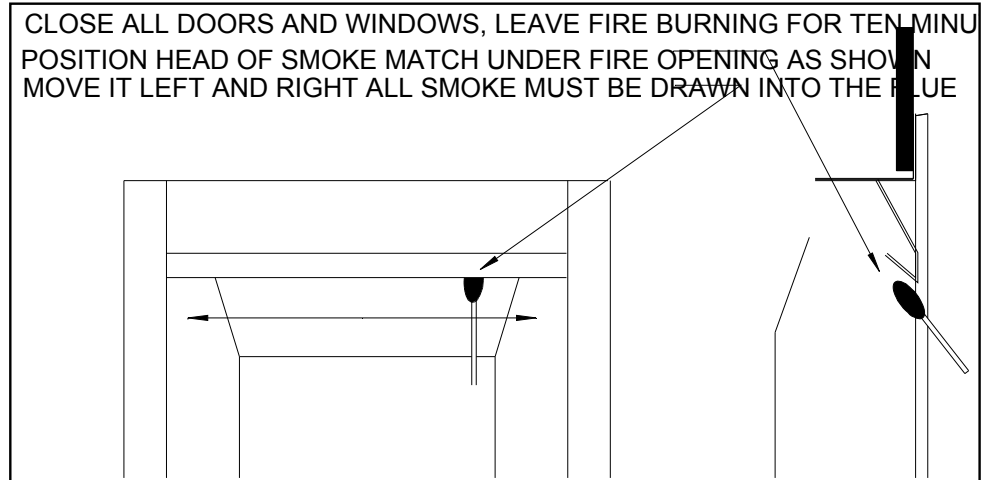
It is important that all the Fuel bed moulded shapes are positioned as shown in these instructions. Lay fuel bed as shown under **Section Three** of these instruction.

**USE ONLY THE FUEL BED PARTS PROVIDED AND NO ADDITIONAL SHAPES MUST BE ADDED.**

## **SECTION TEN Checking Operation of Fire**

### **Checking Product Clearance**

- Check for satisfactory clearance of combustion products, close all doors and windows and leave fire burning for five minutes.
- Insert lighted smoke match 10mm into the fire immediately under the canopy, move match horizontally along from one side to the other all the smoke should be drawn into the flue.
- If spillage occurs, allow a further 5 minutes. Should spillage still occur, turn off the fire, remove the restrictor plate (if fitted) and repeat clearance otherwise seek expert advice.
- If an extractor fan is situated in the room this test should be repeated with the fan running. If there is a connected room with an extractor fan, the test should be repeated with all the doors to that room opened and the extractor fan running at maximum setting. Should spillage occur seek expert advice.



### **ADVISE CUSTOMER THAT:**

The curing effect of heating the fuel bed and other ceramic components will cause an initial odour. This is due to the starch used in the manufacturing process and is non-toxic. Any debris should be cleaned from the appliance. A vacuum cleaner can be used but only after all the Loose fuel bed and Fuel Bed Support have been removed. The appliance should be serviced annually by a competent person in accordance with these instructions and the appliance checked for spillage in accordance with the method detailed in these instructions.

Demonstrate the lighting and extinguishing procedures to the user and the removal and refitting of the decorative trim for cleaning.

If ventilation is fitted for any reason it must be checked regularly to ensure freedom from obstructions.

**Hand these instructions over to the user.**



### **SECTION ELEVEN Maintenance**

- Servicing should be carried out annually by a competent person such as a CORGI-registered person in accordance with the relevant regulations, to ensure the safe and correct operation of the appliance.
- Before commencing any service or replacement of parts, turn off the gas supply to the fire. After servicing check for gas soundness.
- When ordering spare parts please quote appliance name and serial number these can be found on the data badge, which is located by removing the decorative fire trim.
- At least once a year, check for debris in the catchment area behind the fire and in the flue way.
- If soot has accumulated check to establish cause, rectify and clean flue or chimney accordingly.
- Examine the coals or pebbles for signs of cracking and replace if necessary. **IMPORTANT: - REFER TO THE 'HEALTH & SAFETY NOTICE IN SECTION ONE OF THIS BOOKLET BEFORE CLEANING OR REPLACING ANY REFRACTORY MATERIAL.** Refer to coal or pebble layout procedure (Section Three) before attempting to replace coals or pebbles, which should only be replaced as a complete set with no extra coals or pebbles added.
- Check pilot aeration holes for linting; use a vacuum cleaner to remove any lint taking care not to damage the pilot head.

#### **Replacement of Gas Control**

1. Turn off the gas supply by the isolating cock.
2. Remove decorative trims.
3. Remove moulded refractory parts.
4. Disconnect battery leads and remove appliance battery pack.
5. Detach remote control eye. (See Section Nine when repositioning.)
6. Remove 4 screws fixing burner unit into the casing.
7. Disconnect fire at inlet elbow and remove burner unit from the casing.
8. Disconnect the thermocouple from the rear of the gas valve.
9. Undo the three compression nuts securing the pipes to the gas valve and remove the two screws fixing the valve to the bracket.
10. Clean, service or replace gas valve.
11. Re-assemble in the reverse order.
12. Turn on the gas supply, check for soundness and re-commission appliance.

#### **Replacement of Injector**

1. Repeat operations 1-7 for removal of gas control.
2. Remove the 2 screws and lift out the burner and silencer pad.
3. Undo injector Lock nut, compression fitting and remove the injector.
4. Clean or replace injector.
5. Re-assemble in the reverse order.
6. Turn on the gas supply, check for soundness and re-commission

**SECTION ELEVEN Maintenance Cont.**

**Replacement of Silencer**

1. Repeat operations 1-2 for replacement of injector.
2. Remove silencer.
3. Clean, service or replace silencer.
4. Re-assemble in the reverse order.
5. Turn on the gas supply, check for gas soundness and re-commission appliance.

**Replacement of Oxy-Pilot Assembly**

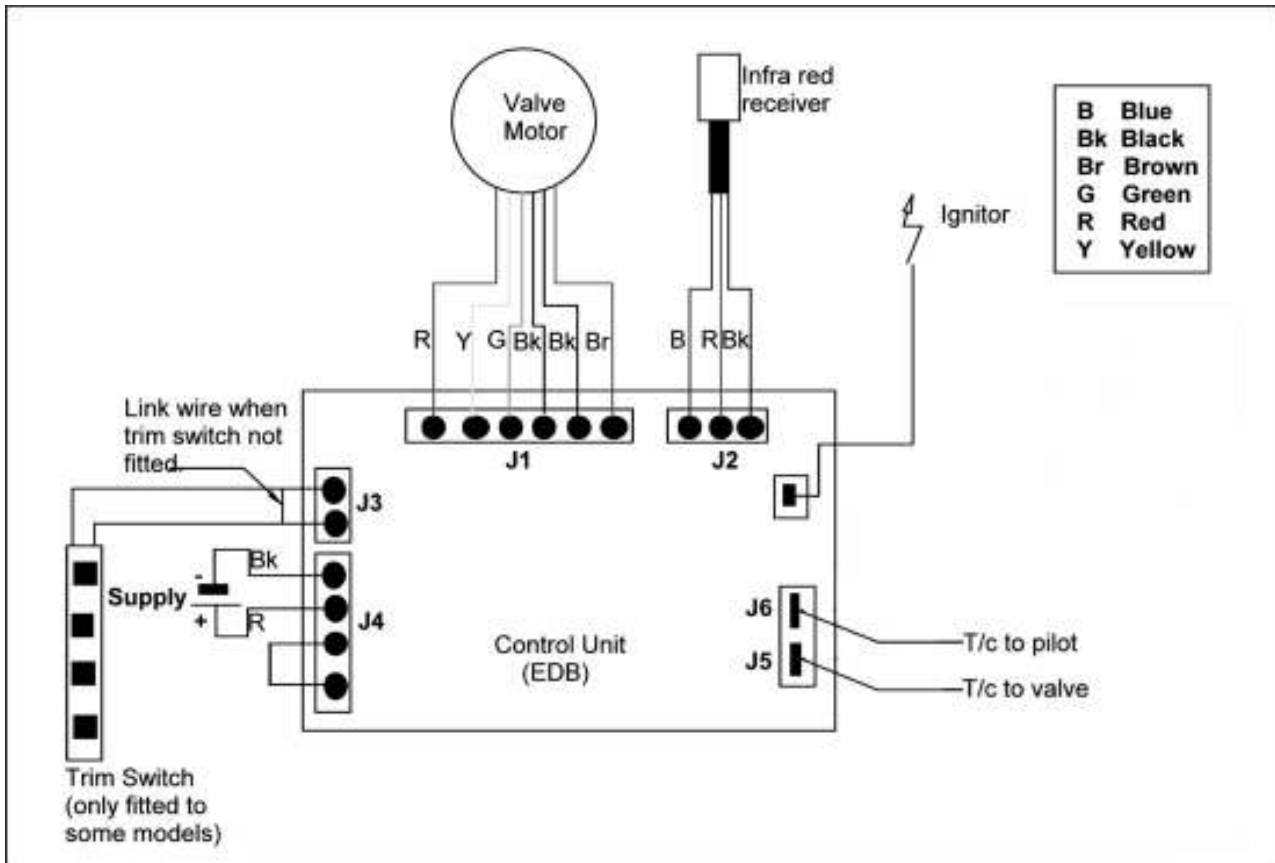
**NOTE:** If the pilot assembly is replaced it must be replaced by an identical unit from the same manufacturer and replaced as a complete unit.

1. Repeat operations 1-7 for removal of gas control.
2. Disconnect the thermocouple from the gas valve.
3. Disconnect the gas connection from the pilot assembly.
4. Remove ignitor lead from pilot assembly.
5. Undo the Long-nut securing the oxy-pilot to the burner.
6. Clean or replace oxy-pilot (NOTE: - THIS IS A NON-SERVICEABLE DEVICE AND MUST NOT BE ADJUSTED).
7. Re-assemble in the reverse order.
8. Turn on the gas supply, check for gas soundness and re-commission appliance.

**Replacement of Control Unit (EDB)**

1. Repeat operations 1-7 for removal of gas control.
2. Disconnect leads from control unit and remove securing screws.
3. Re-assemble in the reverse order.
4. Turn on the gas supply, check for gas soundness and re-commission appliance.

**SECTION TWELVE Wiring Diagram**



**PARAGON SIESTA PLUS**

**THIS IS YOUR EXTENDED THREE YEAR PARTS**

**WARRANTY**

**PLEASE READ IT CAREFULLY AND ENSURE YOUR INSTALLER HAS FILLED IN THE FIRST PORTION, KEEP IT IN A SAFE PLACE SO THAT IT IS AVAILABLE WHEN YOUR CORGI ENGINEER CARRIES OUT THE ANNUAL SERVICE.**

**THIS IN NO WAY REDUCES YOUR STATUTORY RIGHTS**

**THE WARRANTY COMMENCES FROM THE DATE OF PURCHASE YOU MUST RETAIN YOUR RECEIPT OR INVOICE AS PROOF OF PURCHASE.**

**THIS EXTENDED WARRANTY SPECIFICALLY EXCLUDES SOFT REFRACTORY COMPONENTS AND ANY BATTERIES.**

Terms and Conditions

1. The appliance must be installed by a CORGI registered person.
2. The appliance must be used in accordance with the users instructions.
3. A CORGI registered person must service the appliance annually.
4. The service log must be correctly filled out and the record of annual services must be up to date and supported by receipts in each case.
5. This warranty is not transferable and relates to the original installation only.
6. The Registration Form must be correctly filled out and returned.
7. The appliance has not been subjected to misuse or accident or been modified or repaired by any person other than the authorised employee or authorised representative of Charlton and Jenrick Ltd.
8. The registration form must be returned within 3 months of purchase.

**PARAGON HELPDESK NUMBER 01952 278 020**

## PARAGON SIESTA PLUS

### Important

For future reference we suggest you record the following details here, and keep the receipt as proof of purchase. This information may be asked for when you contact the helpdesk.

Model: **PARAGON SIESTA PLUS**

Serial No.

--	--	--	--	--	--	--	--

The serial number can be found on the label attached to the packaging and on the data badge, which is located on the appliance behind the trim, which is held on with magnets.

Retailer Name \_\_\_\_\_

Address \_\_\_\_\_  
\_\_\_\_\_  
\_\_\_\_\_

Date of Purchase

--	--	--	--	--	--	--	--

### SERVICE LOG

The following information must be complete and supported by receipts as part of the conditions of the extended three year parts warranty and the appliance must be registered by completing and returning the registration document (last page of this booklet) to Paragon Fires.

Date of First annual service:

--	--	--	--	--	--	--	--

Engineer Name \_\_\_\_\_

Corgi Registration No.

--	--	--	--	--	--	--	--	--	--

Date of Second annual service:

--	--	--	--	--	--	--	--

Engineer Name \_\_\_\_\_

Corgi Registration No.

--	--	--	--	--	--	--	--	--	--

We may introduce modifications to products from time to time, and consequently the details given in this booklet are subject to alteration without notice.

**Paragon Fires**

Telford  
Shropshire  
TF7 4QJ

Telephone 01952 278 020  
Web Site [www.paragonfires.co.uk](http://www.paragonfires.co.uk)



**PLEASE REGISTER YOUR 3 YEAR WARRANTY WITH US TODAY**

Simply detach this sheet from this booklet, complete and return it in a stamped addressed envelope to:

**PARAGON FIRES**

Charlton and Jenrick Ltd  
UNIT G1 – G3  
HALESFIELD 5  
TELFORD  
SHROPSHIRE  
TF7 4QJ

YOUR DETAILS

Name \_\_\_\_\_

Address \_\_\_\_\_  
\_\_\_\_\_  
\_\_\_\_\_

Post Code

TELEPHONE No.

**PRODUCT DETAILS**

Model: **PARAGON SIESTA PLUS**

Serial No.

This information can be found on the label attached to the packaging and on the data badge, which is located on the appliance behind the trim.

Date of Purchase

WHERE DID YOU PURCHASE THIS PRODUCT

Name \_\_\_\_\_

Address \_\_\_\_\_  
\_\_\_\_\_  
\_\_\_\_\_

Post Code

TELEPHONE No.

**Paragon Siesta Plus Remote Coal Packing**

Product ID Label	A-0097	Serial No Prefix	KA
Fire Box Labels:	Top Spillage (Pair) Data Badge		
Fire Box Grommet			
Warning Label (Fire Guard)			
Burner Tray / Box Assembly			
Rear Ceramic Insert			
Coal Fuel bed (Part No 4499)			
Fixing (0705) (includes 4 magnets & foam seal)			
Battery Holder			
Hand Remote			
AA Battery (12)			
9V Battery (Part No 1904)			
Instructions			
ID Label & Packing Label			
Serial Number			
Inspector			

**Paragon Siesta Plus Remote Pebble Packing**

Product ID Label	A-0105	Serial No Prefix	KA
Fire Box Labels:	Top Spillage (Pair) Data Badge		
Fire Box Grommet			
Warning Label (Fire Guard)			
Burner Tray / Box Assembly			
Rear Ceramic Insert			
Pebble Fuel bed (Part No 4498)			
Fixing (0705) (includes 4 magnets & foam seal)			
Battery Holder			
Hand Remote			
AA Battery (12)			
9V Battery (Part No 1904)			
Instructions			
ID Label & Packing Label			
Serial Number			
Inspector			